



TIDEFLEX Mixing System for Reservoirs

FILL AND DRAW MANIFOLD HYDRAULICS

2,000 GPM _ FILL
3,000 GPM _ DRAW

PROPRIETARY NOTICE
 THIS DOCUMENT CONTAINS PROPRIETARY INFORMATION OF TIDEFLEX TECHNOLOGIES. IT IS LOANED BY TIDEFLEX TECHNOLOGIES, SUBJECT TO THE CONDITIONS THAT IT AND THE INFORMATION EMBODIED THEREIN SHALL BE USED ONLY FOR RECORD AND REFERENCE PURPOSES. IT SHALL NOT BE USED OR CAUSED TO BE USED IN ANY WAY PREJUDICIAL TO THE INTERESTS OF TIDEFLEX TECHNOLOGIES. IT SHALL NOT BE REPRODUCED OR COPIED IN WHOLE OR IN PART, OR DISCLOSED TO ANYONE WITHOUT THE DIRECT WRITTEN PERMISSION OF TIDEFLEX TECHNOLOGIES AND SHALL BE RETURNED UPON REQUEST.

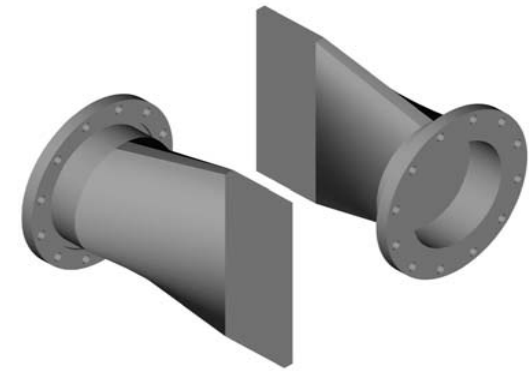
Reservoir Name: Marina Reservoir
Reservoir Size: 106' Dia. X 30' SWD
Reservoir Capacity: 2 MG
End User: Water Utility Company
Consultant: Consulting Engineer

Ambient Density = 62.4 lbm/ft³
 Effluent Density = 62.4 lbm/ft³
 dS/S = 0
 C = 100 Hazen Williams Roughness Coefficient
 Cd = 0.95

FILL CYCLE MANIFOLD HYDRAULICS

| | Cumulative Flow | Jet Velocity | Friction Loss | Total Head |
|---------------|-----------------|------------------|---------------|------------|
| | (gpm) | (fps) | (ft) | (ft) |
| | 712.30 | 9.83 | 0.010 | 1.6 |
| | 991.71 | 9.86 | 0.000 | 1.6 |
| | 1271.12 | 9.86 | 0.030 | 1.6 |
| | 2000.00 | 9.96 | 0.108 | 1.7 |
| TOTALS | 2,000.0 | 9.9 (AVE) | 0.15 | 1.7 |

TIDEFLEX INLET NOZZLES



DRAW CYCLE MANIFOLD HYDRAULICS

| Outlet Fire Flow | WF-3 Headloss | Friction Loss | Headloss For WF-3 |
|------------------|---------------|---------------|-------------------|
| (gpm) | (ft) | (ft) | (ft) |
| 3000 | 0.8 | 0.1 | 0.9 |

WATERFLEX OUTLET VALVES

